



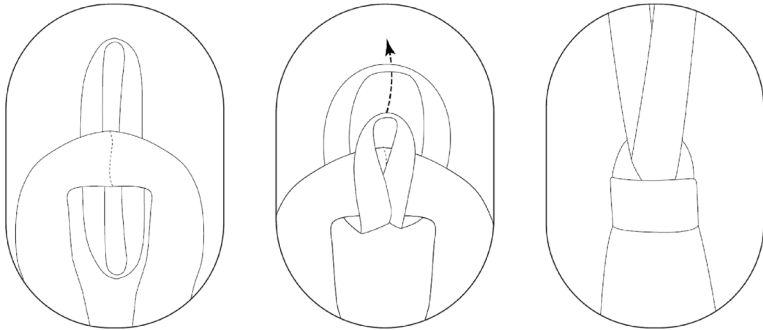
Sensory Therapy Swing Instructions

SAFETY FIRST NOTICE - IMPORTANT POINTS

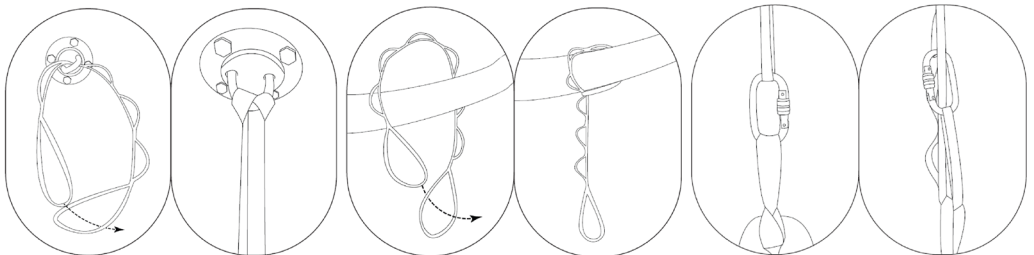
- 85Kg weight limit
- Active eyes on supervision at all times
- Fall and strangulation hazards if product not used correctly
- Only use correct hardware that comes with the swing
- Read the installation instructions carefully and follow each step. A professional should install.
- Contact Play'n'Learn at kiaora@playnlearn.co.nz if you would like a handyman to install for you.
- Swing fabric is designed for indoor use. It can go outside but must store inside at night.
- Routinely check all aspects of product for wear and damage, discontinue use if damage found.
- Move fabric around periodically to prevent wear in one spot

INSTALLATION INSTRUCTIONS

In order to install the mounting strap, find the seam on the swing, then put it under the fabric and make a neat loop. Under the child's weight the loop will tighten in a way that prevents the material from moving around.



Our mounting kit was designed for ceilings with wooden studs. The ceiling hook is easy to install and shouldn't cause any problems, however, we always recommend asking a professional for help. Please remember - **safety first**.

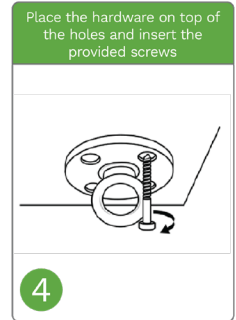
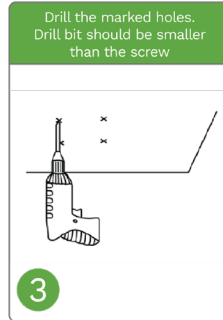
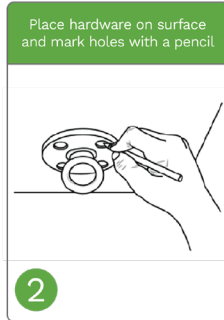
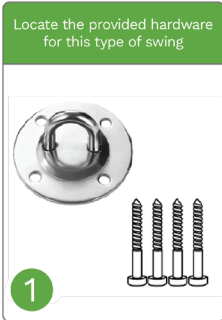


INSTALLATION INSTRUCTIONS CONTINUED

1. Locate a beam minimum 4cm wide, and a site with 1 metre radius from any objects.
2. Use base plate to mark holes in beam. Use 12mm bit to drill to 5cm depth into beam.
3. Insert 4 bolts into holes, so metal sleeve is flush with beam. If beam can't accommodate 4 bolts, 2 are sufficient.
4. Install base plate onto bolts, and tighten to secure bolt, sleeve, and plate into beam.
5. Connect carabiner to plate, thread rope through swing and carabiner, and adjust length accordingly.

The tools you need:

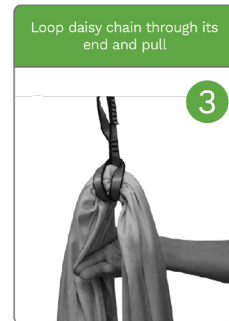
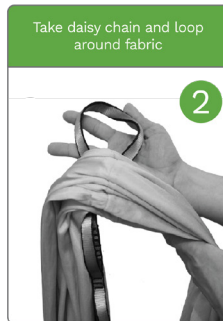
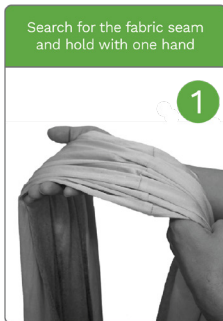
- Step ladder
- Stud finder
- Pencil
- Drill with drill bits
- Socket wrench



Before use, check for durability. The hook should withstand 85kgs of load.

To hang the daisy chain on the ceiling hook, just do the following 3 steps:

1. Put the chain through the metal hole,
2. Run one end of the chain through the other,
3. Tighten the loop.



In order to enjoy the swing you may mount the daisy chain in any place that will allow to tighten the loop. Always make sure that the element the chain is mounted on will hold the child's weight.

Now you can go ahead and hang the swing using the carabiner hook. In order to adjust the height, just hook the carabiner hook onto corresponding daisy chain loop.

DISCLAIMER

Our sensory swing is intended for ages 3 years and up, but may be acceptable for younger children provided constant adult supervision and care.

Adult supervision is required at all times. To prevent injury only one person at a time should use the swing. Please inspect the daisy chain strap occasionally to prevent breaks and reposition the fabric periodically to prevent excessive wear in one spot.

Play'n'Learn assumes no liability for injury sustained through the use of this product.